

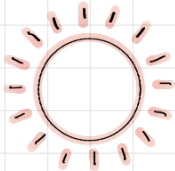
# Artwork Care Guide

## Pencil on MDF

Thank you for your purchase!

Whilst I make my artworks built to last by using high quality materials, artworks are still delicate and need to be treated with love to keep them looking their best.

Please follow this guide to ensure your artwork remains in perfect condition.



Please avoid placing your artwork in direct sunlight, prolonged exposure to UV light can fade and damage your art.



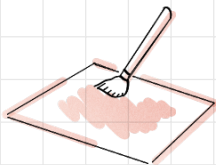
Please do not expose your artwork to extreme temperatures or moisture. I use watercolour pencils in my pieces, direct contact with water will leave permanent stains and attempting to wipe the water off will smear the picture. Moisture may also warp the MDF.



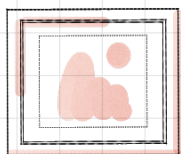
When handling your artwork please ensure your hands are clean and dry. Skin oils and moisture can transfer onto MDF leaving behind permanent stains.



When displaying or storing your artwork please keep it in a dry location, damp environments can lead to mould, and may cause the MDF to swell over time.



If you need to clean your artwork, please lightly wipe it with a Very soft brush.



I do recommend mounting and framing your artwork if possible. This will help protect it and prevent you needing to clean it.

Please feel free to contact me if you have any questions or concerns.

I hope you enjoy your artwork! - Alex ♥